

# Technical Manual

# TL260 L/R

**JBL**

## ACOUSTIC & ELECTRICAL SPECIFICATIONS:

- Nominal Impedance 8 Ohms
- Max Amp Power 250 Watts\*
- Frequency Response 32Hz – 40kHz
- Sensitivity 92dB (2.83V @ 1 meter)
- Crossover Frequencies 280Hz, 1.2kHz, 4.5kHz, 20kHz

## SYSTEM COMPONENTS:

- Grille (Right) 244-120-05175-0BAE
- Grille (Left) 244-120-05174-0BAE
- Low-Frequency Transducer 12" (305mm) PolyPlas™ cone, shielded (335151-002)
- DC Resistance 5.6 Ohms, ±10%
- Midrange Transducer 4" (101mm) PolyPlas cone, shielded (353116-003)
- DC Resistance 4.8 Ohms, ±10%
- Mid-Bass Transducer 6" (152mm) Polyplas cone, shielded (353110-001)
- DC Resistance 4.6 Ohms, ±10%
- High-Frequency Transducer 1" (25mm) Pure-titanium dome (353137-002)
- DC Resistance 3.3 Ohms, ±10%
- Ultrahigh-Frequency Transducer (3/4") 19mm Mylar® dome (353107-001)
- DC Resistance 3.6 Ohms, ±10%
- Crossover Network 013-7600-05217-E

## AURAL SWEEP TEST SPECIFICATIONS:

- System Aural Sweep Test 6.0V Input 20Hz to 20kHz
- L.F. Aural Sweep Test 5.0V Input 20Hz to 500Hz
- M.B. Aural Sweep Test 5.0V Input 200Hz to 2kHz
- M.F. Aural Sweep Test 5.0V Input 1kHz to 5kHz
- H.F. Aural Sweep Test 2.83V Input 4kHz to 20kHz
- U.H.F. Aural Sweep Test n/a

## PHYSICAL SPECIFICATIONS:

- Dimensions With Grille 47" x 20" x 13" (1194mm x 508mm x 330mm)
- Weight 84 lb/38.2kg (each)

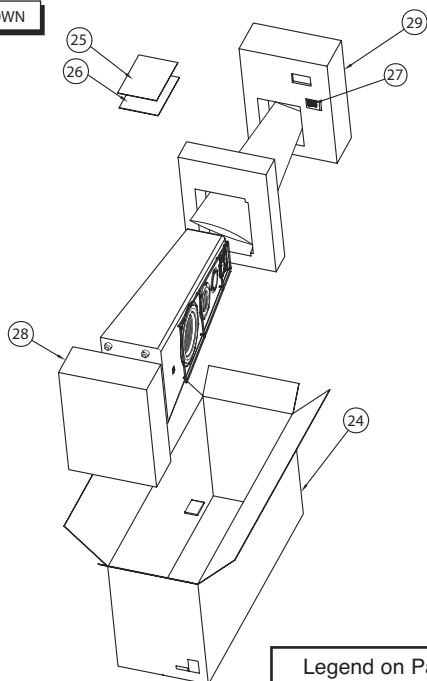
## WARRANTY:

- Refer to Warranty Statement packed with each product.

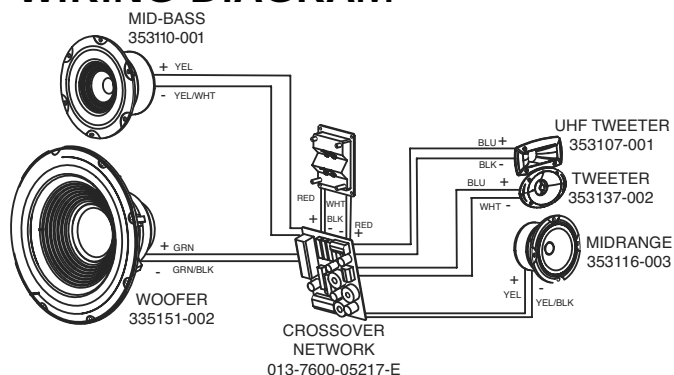
\* The maximum recommended amplifier power rating will ensure proper system headroom to allow for occasional peaks. We do not recommend sustained operation at these maximum power levels.

## PACKAGING

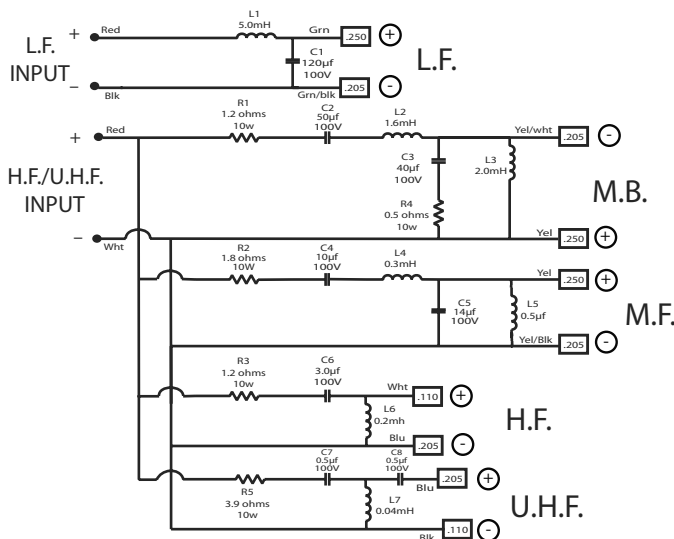
LEFT UNIT IS SHOWN



## WIRING DIAGRAM



## TL260 L/R SCHEMATIC



TL260 L/R

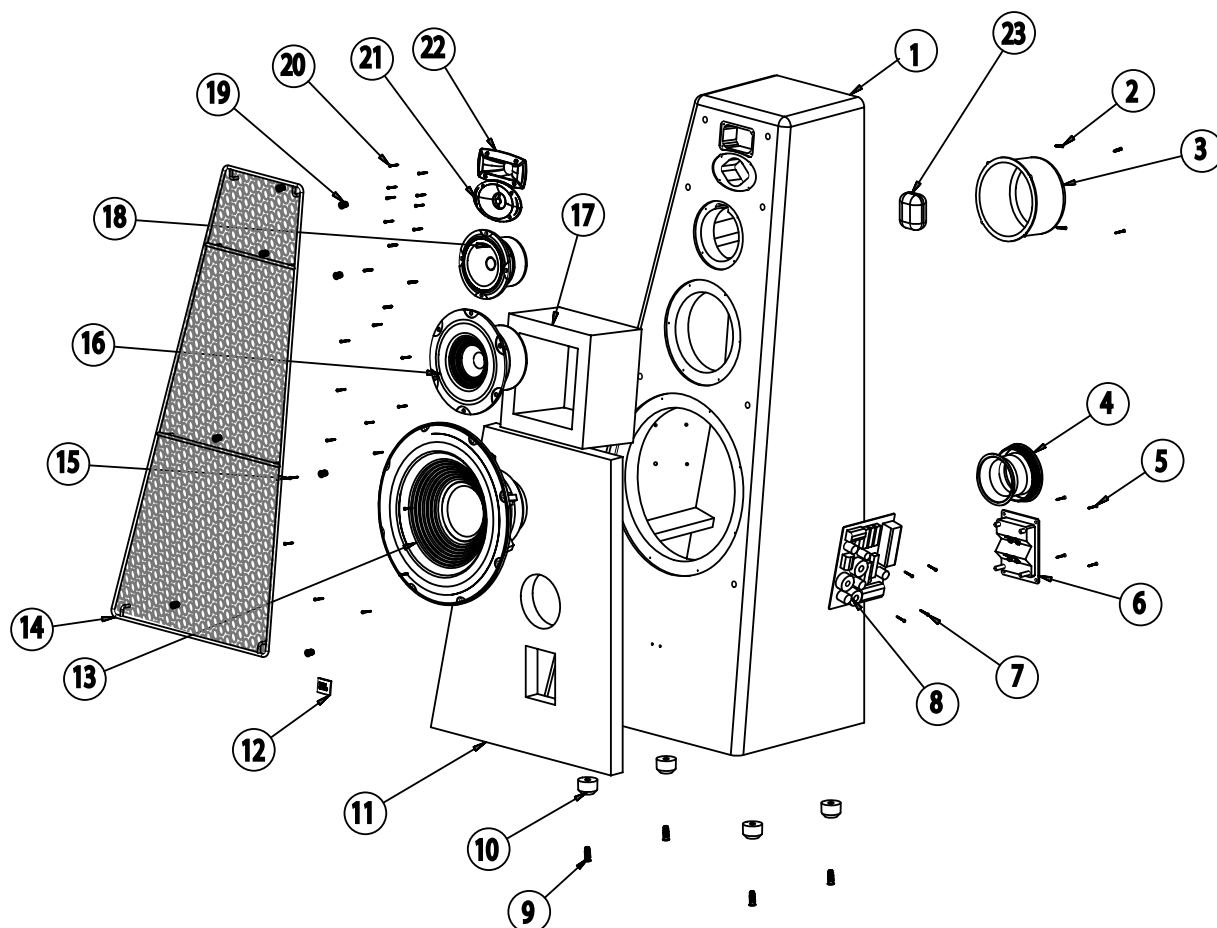
# Technical Manual

# TL260 L/R

**JBL**

## EXPLODED VIEW

### LEFT UNIT SHOWN



ITEM NO.	PART NO.	DESCRIPTION	QTY.	ITEM NO.	PART NO.	DESCRIPTION	QTY.
1	NOT FOR SALE	TL260 CABINET L/R	1	20	352-GM03520D851-E	SCREW, TWT, UHF TWT, MID	12
2	353-AM03511D812-E	SCREW, MIDRANGE CUP	4	21	353137-002	1" TWEETER	1
3	247-040-05040-0BAE	MIDRANGE CUP (FLOWERPOT)	1	22	353107-001	3/4" UHF TWEETER	1
4	249HIPS-05113-0VAE	PORT TUBE	1	23	NOT FOR SALE	FILLER	1
5	352-BM04022D931-E	SCREW, TERMINAL CUP	4	24	402-000-05592-E	OUTER CARTON FOR TL260 (RIGHT)	1
6	317-ABS-05059-0BAE	TERMINAL CUP	4		402-000-05590-E	OUTER CARTON FOR TL260 (LEFT)	1
7	352-HM04020D855-E	SCREW, NETWORK	4	25	405-000-05122-E	WARRANTY CARD	1
8	013-7600-05217-E	CROSSOVER	1	26	406-000-05408-E	OWNER'S MANUAL	1
9	357-CC25153-E	NUT/INSERT	4	27	322-000-05017-0BAE	SPIKE FOOT SET	1
10	320-RUB-05085-0BAE	RUBBER FEET	4	28	431-000-05631-E	FOAM END, BOTTOM	1
11	NOT FOR SALE	FILLER	1	29	431-000-05632-E	FOAM END, TOP (RIGHT)	1
12	316-ABS-05186-0VAE	LOGO	1		431-000-05630-E	FOAM END, TOP (LEFT)	1
13	335151-002	12" WOOFER	1				
14	244-120-05175-0BAE	FRONT GRILLE (RIGHT)	1				
	244-120-05174-0BAE	FRONT GRILLE (LEFT)	1				
15	352-KM04020D952-E	SCREW, WOOFER, MIDBASS	14				
16	353110-001	6" MID-BASS	1				
17	NOT FOR SALE	FILLER	1				
18	353116-003	4" MIDRANGE	1				
19	327-010-00622-E	GRILLE CUP	8				

TL260 L/R