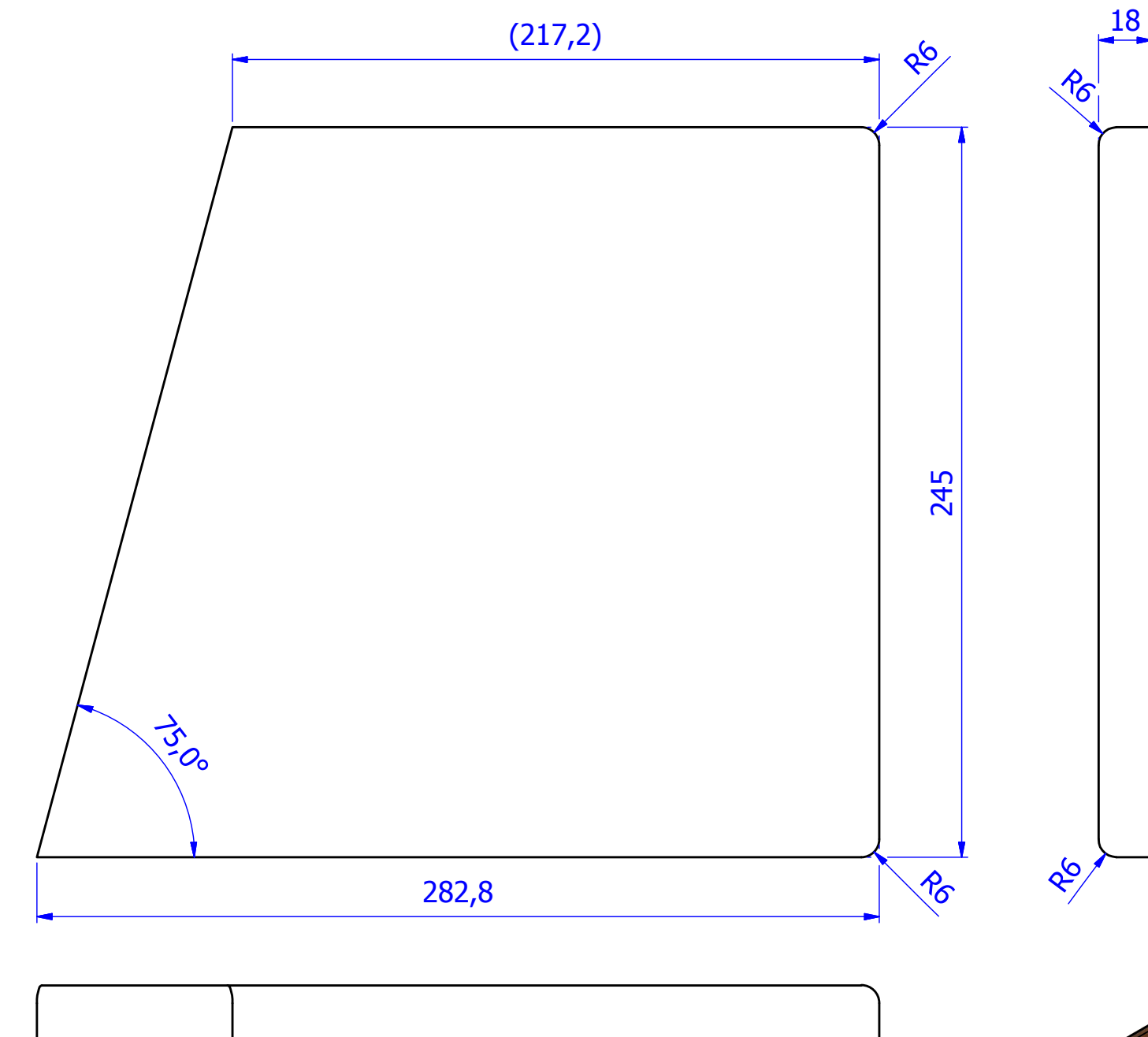
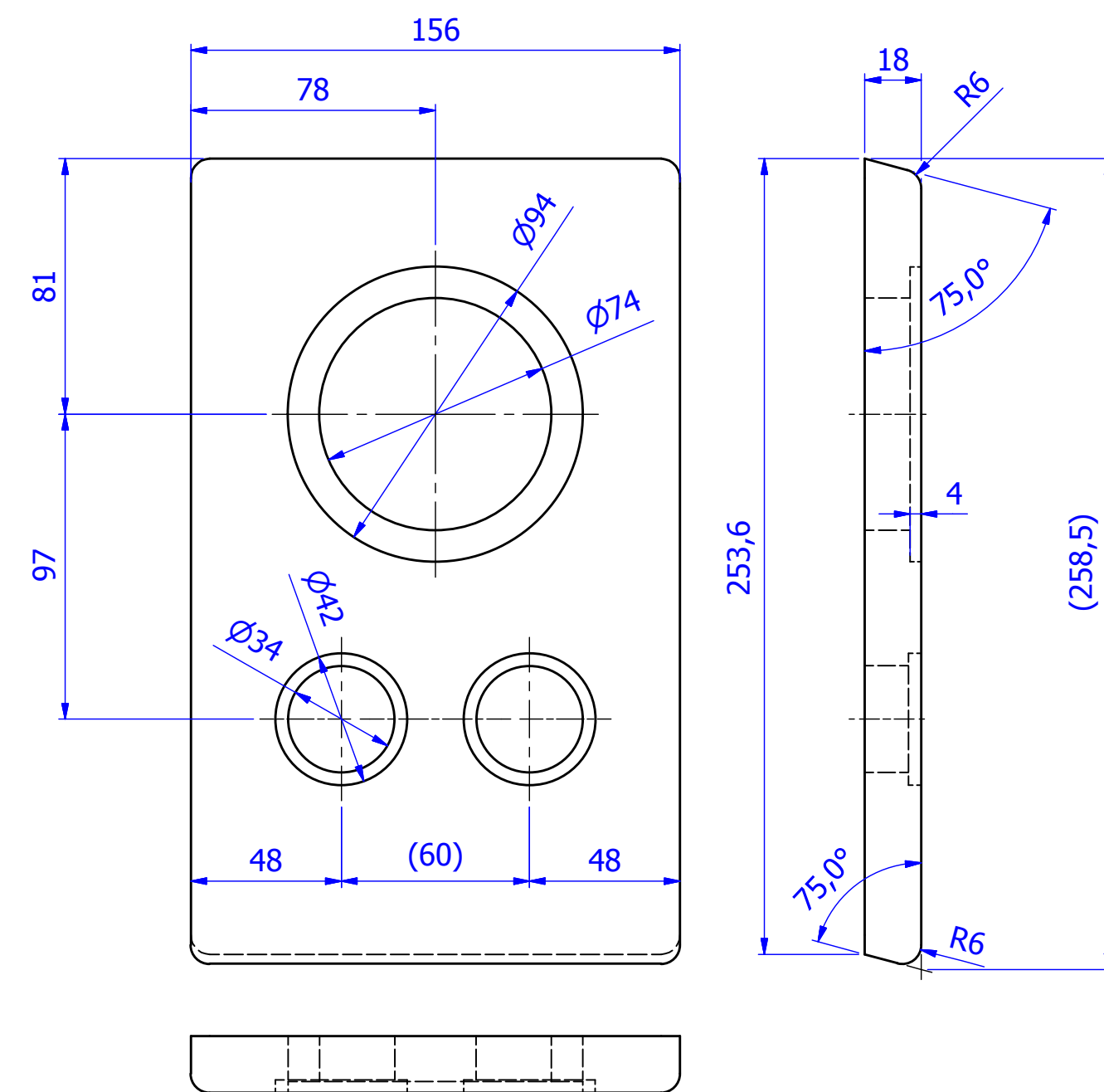
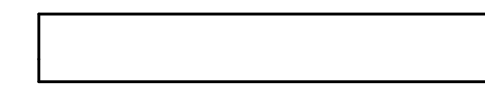


Technical drawing of a mechanical part showing three views: front, top, and side.

**Front View (Top):** A rectangle with a total width of 120 and a total height of 209. A central square feature has a side length of 77. The distance from the top edge of the rectangle to the top edge of the square is 105. The distance from the left edge of the rectangle to the left edge of the square is 60. The square has rounded corners with a radius of R3.

**Top View (Bottom):** A rectangle with a total width of 120 and a total depth of 18. The central square feature has a side length of 77. The distance from the left edge of the rectangle to the left edge of the square is 60. The distance from the front edge of the rectangle to the front edge of the square is 51. The square has rounded corners with a radius of R3.

**Side View (Right):** A rectangle with a total height of 18. The central square feature has a side length of 77. The distance from the top edge of the rectangle to the top edge of the square is 105. The distance from the left edge of the rectangle to the left edge of the square is 60. The square has rounded corners with a radius of R3.



Technical drawing showing the front and side views of a mechanical part with the following dimensions:

- Front View:**
  - Top horizontal edge: 217,2
  - Bottom horizontal edge: 282,8
  - Right vertical edge: 245
  - Top-right corner radius: R6
  - Bottom-right corner radius: R6
  - Left side angle: 75,0°
- Side View:**
  - Width: 18
  - Corner radius: R6

