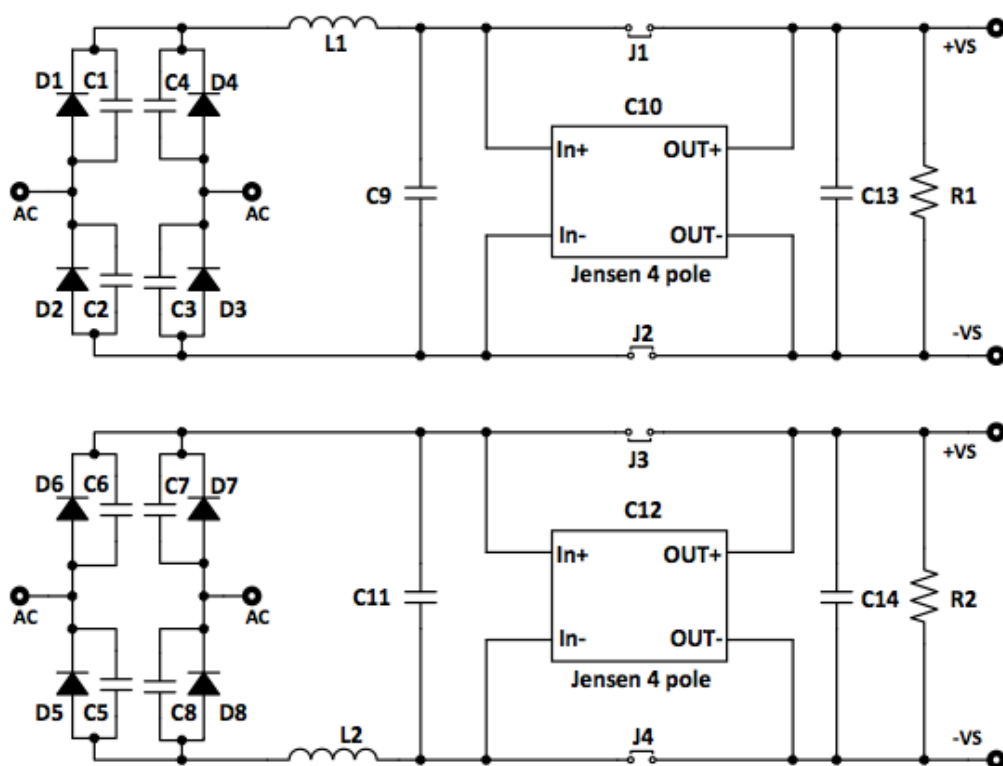


BP-507 Part List



BP-507 Dual Power Supply

Item	Designator	Part Number	Note
1	D1-D8	Hexfred HFA08TB60PBF(8A/600V)	
2	C1-C8	0.01uF/250V Polypropylene Film	LS=10mm
3	C9,C11,C13,C14	0.1uF/250V Polypropylene Film&Foil	LS=25mm, or 30mm
4	C10,C12	Jensen 4-Pole E-Cap 10,000uF/40V	See note below
5	R1,R2	2K21/3W	Breeding resistors

- Older Mundorf 4-Pole E-caps also have the same pin spacing. If regular 2-pole E-Caps (LS=10mm, Dia=35mm.) are used, install wire jumper J1-J4.
- Install wire jumpers over L1-L4 footprints if chokes not used.
- C1-C8 are optional when soft recovery diodes such as Hexfred are used.